

The intelligent choice.



# **IQ STOCK PRICE UPDATE**

## P R E F A C E

This is the IQ Stock Price Update guide for IQ Business & IQ Enterprise software systems.

The document will aid in understanding and configuration of the IQ Stock Price Update in order for it to function correctly.

Although every effort has been made to keep this IQ Stock Price Update document up to date, some of the screen examples may not be 100% the same as the ones reflected in previous versions of IQ Stock Price Update. This is due to the continuous development and improvement of the IQ System.

Unfortunately, there will be a discrepancy from time to time. We do apologize for the inconvenience that it may cause.

Should you feel that the IQ Stock Price Update document is inadequate or requires further explanation or more and better examples, please feel free to email us.

We would love to have some feedback in order to improve the IQ Stock Price Update document in some way or another.

Regards,

IQ Retail (PTY) LTD



## CONTENTS

<b>IQ STOCK PRICE UPDATE</b> .....	<b>5</b>
<b>INTRODUCTION</b> .....	<b>5</b>
FUNCTIONALITY .....	5
<b>CREATE A CSV FILE</b> .....	<b>7</b>
<b>AVAILABLE FIELDS</b> .....	<b>9</b>
CODE .....	9
DESCRIPT .....	9
ALT_DESCRIPT .....	9
ITEMCATEGORY .....	9
DEPARTMENT .....	9
SUBDEPARTM .....	10
GENCODE .....	10
BARCODE .....	10
COLORMATRIX .....	10
SIZEMATRIX.....	10
CYCLE .....	10
LINECOLOURTYPE .....	10
PACKSIZE .....	10
PACKDES .....	11
AVRGCOST .....	11
SELLPRICE1 - 10.....	11
REGULAR_SU .....	11
SUPPLIERCO .....	11
MEMO.....	11
STATUS.....	11
VATRATE .....	12
BINL.....	12
MIN_LVL.....	12
MAX_LVL.....	12
ORD_LVL .....	12
ORD_QUAN.....	12
ORDERMETHOD .....	12
ORDERFORMULA .....	12
MAXDISCOUNT .....	12
REPORTITEM .....	13
REPORTCFACOR .....	13
NEWPRICE1 - 10.....	13
PRICECHG1.....	13
FUTURECOST .....	13
FUTURECOSTDATE .....	13
GENERICTYPE .....	13
BRAND .....	13
MODEL.....	13
TECHNICALSPEC.....	13
SUPPHIERARCHY .....	14
SUPPDEPARTMENT .....	14
IMPORTTYPE .....	14

TARIFFCODE ..... 14

MATERIAL ..... 14

ASSEMBLYTYPE ..... 14

GUARANTEETERM..... 14

COLORDETAILED ..... 14

INCOTERMS..... 14

MEMO..... 14

BUYER ..... 14

CATEGORY..... 14

RANGE..... 15

ABCCLASS..... 15

ABCCLASSGP ..... 15

ALLOWDISCOUNTBITS ..... 15

DISALLOWDECIMALS ..... 15

ENTERSER..... 16

VOLUMETRICS..... 16

SCALEITEM ..... 16

STOCKTYPE..... 17

ONHOLDTYPE..... 17

EXCLUDESELLINGVALUE..... 17

DEFAULTWAREHOUSE ..... 18

DEFAULTPURCHASINGWAREHOUSE..... 18

DEFOUTSTATUSCODE ..... 18

DEFINSTATUSCODE..... 18

MDR\_SUPPLIER\_ID ..... 18

MULTIPLEBARCODE ..... 18

MULTIPLEBIN ..... 18

BINWAREHOUSE ..... 19

**IMPORTING OF .CSV FILE .....19**

    BUTTON FUNCTIONALITY ..... 21

# IQ STOCK PRICE UPDATE

## INTRODUCTION

The IQ Stock Price Update module has been designed to enable users to import their own stock master file details (stock details) without having to enter each stock item one by one under Stock Maintenance.

This module provides the functionality to import a CSV (comma delimited) text file of predetermined format, into the IQ system.

**NOTE:** No Style Management Stock Items can be imported. They have to be created by using the Style Management option in the Stock Maintenance module.

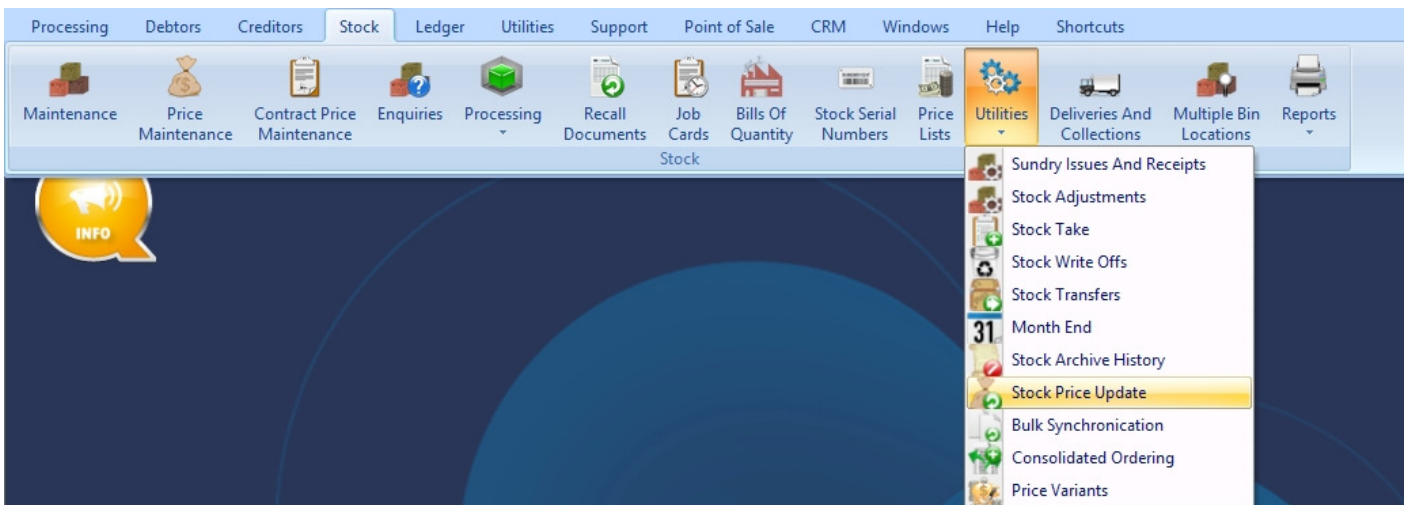
**SUGGESTION:** For fields where the user is not sure what the import value should be, a stock item that needs to be updated can be changed manually in Stock Maintenance. The user can then under Stock Maintenance select the specific field to be visible and see what the new value has to be. A CSV file can then be created to change the value in all the other selected stock items.

Some of these values are calculated according to the specific modules selected.

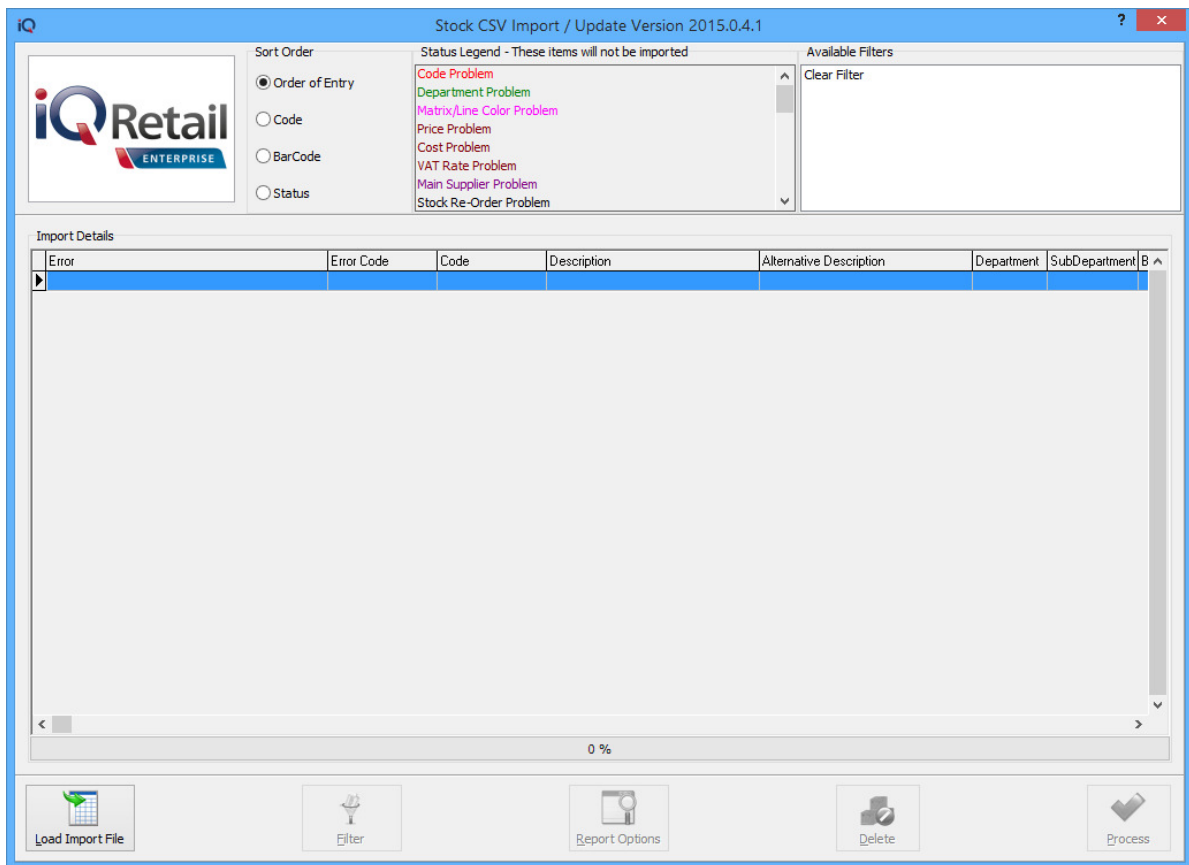
**EXAMPLE:** The user has realised that there is a problem with the discount allowed, the system allows discount where it should not. Stock Price Update allows the user to import a CSV file to correct the problem, instead of editing each stock item and correcting the module selection.

## FUNCTIONALITY

The Stock Price Update functionality can be found under IQ Enterprise → Stock → Utilities → Stock Price Update.



The following screen will be displayed:



**SORT ORDER**

The Sort Order allows the user to change the sequence in which the data will be displayed on the screen.

**STATUS LEGEND**

Implementing the import of the selected CSV file, the data will be tested for integrity. All the imported items will be displayed on the display grid and each will be flagged with a status, indicating its suitability for the update process. The status of the import details is colour coded to enable easy identification of items with problems on, as well as the type of error.

Only items that have a “No Error” status will be considered for the update process.

**NOTE:** Stock Items with problems have to be corrected before the .CSV file can be imported into IQ again. No corrections can be made on the items that are listed in the Imported Details.

**AVAILABLE FILTERS**

Once a filter has been created and saved, it will appear in the top right corner of the screen. Double click on a filter to activate it and double click on “Clear Filter” to see all the imported items.

**IMPORT DETAILS**

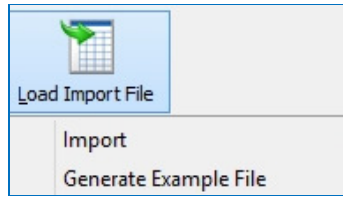
Once the import of the CSV file is done, all the imported stock items will be displayed on the Stock CSV Import / Update screen.

In addition to the stock master information fields, there are error descriptions and error code fields. These columns will be colour coded according to the colour legend. When an item has a colour coded error, the item will not be imported during the import process. Only valid items will be imported.

After the import process has been completed, all the successfully imported items will be removed from the display grid. All items that contained errors have to be rectified in Excel or Notepad and have to be imported again.

## BUTTON FUNCTIONALITY

### LOAD IMPORT FILE



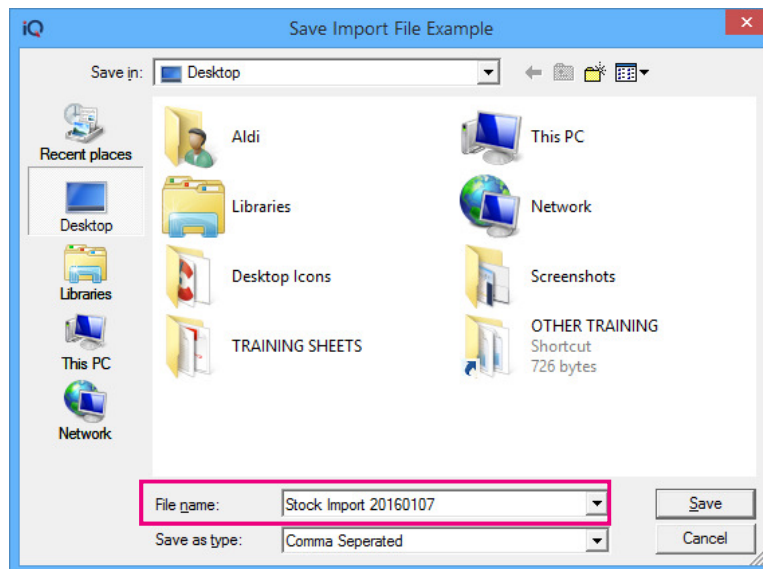
### IMPORT

The Import option will be used to import the CSV text file with the predetermined format. Only fields determined in the Example File can be imported.

### GENERATE EXAMPLE FILE

An example CSV file will be created which will assist in the creation of the new stock items to be imported.

Once the user has clicked on the Generate Example File option, the user will be prompted for an Export location where the newly created CSV file should be saved.

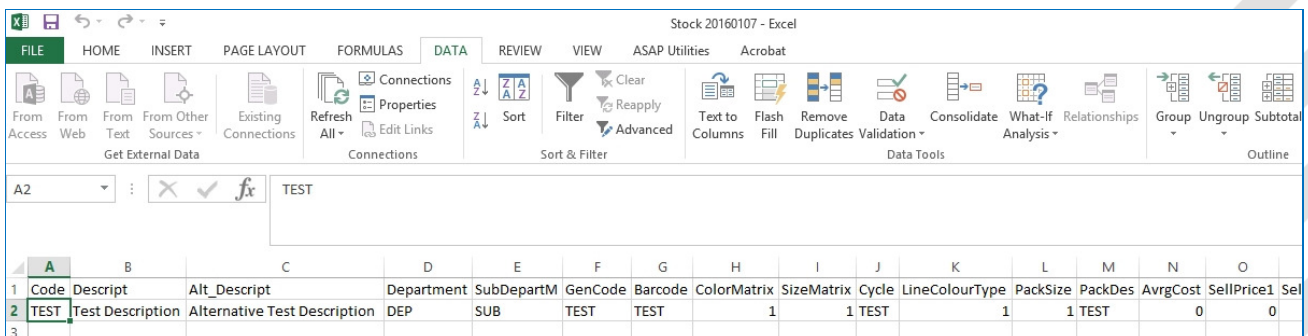


Once the CSV file has been saved, the user can close the import screen.

## CREATE A CSV FILE

The CSV file which was created as an example, can be imported into Excel or WordPad or Notepad.

**NOTE:** It is easier to manipulate data in an Excel spreadsheet.



The format of the import file is defined as follows:

- First Line: Header Information. If the import file is opened in WordPad or Notepad, each field is displayed and separated by a comma – e.g. Code,Barcode,SellPrice1.
- All the subsequent lines are relevant information for each defined field for each stock item.- e.g. ABC,600412343332,47.50,,0.00.
- Example of a correct Stock CSV Import file:

```
CODE,DESCRIPT,BARCODE,DEPARTMENT,BINL,PACKSIZE,ONHAND,UsepriceIn
c1,SUPPLIERCO
000000010101,NIKE PANTS BS,000000010101,1,1,0.00,481.00,R 71.25,
000000010102,NIKE PANTS BM,000000010102,1,1,0.00,-1.00,R 42.75,
000000010103,NIKE PANTS BL,000000010103,1,1,0.00,41.00,R 134.27,
```

In this example the fields for Code and Barcode have been set as TEXT , to allow leading zeros.

When new stock items are to be imported, there are at least four (4) **mandatory** fields which have to be completed for the file to import correctly:

- Code
- ItemCategory
- Department (Major)
- VatRate

**NOTE:** Depending on the links set up on Stock in the Module Parameters, more fields might become mandatory.

If the major departments are **linked** to sub-departments (minor departments) in the Module Parameters, the sub-department also becomes mandatory and should be included in the import CSV file.

**NOTE:** It is not compulsory to import all the fields Generated in the Example File to create or maintain stock items. In other words, if the user doesn't use all the fields, the ones that are not necessary can be removed or deleted.

The user also has the option to make changes to existing stock items, by importing the item code and only the fields of the stock items which need to be changed.

**NOTE:** Ensure that the header information for each import is correct, as provided in the Generated Example File.

**NOTE:** In Excel, if any code in anyone of the stock item fields needs to start with a zero (0), set the field format for those columns to be text. Excel doesn't except leading zeros (0). It is advisable not to use departments, etc. that start with zeros (001), because if the CSV file is opened in Excel the zeros will disappear, unless they are specified as TEXT columns.

**VERY IMPORTANT:** The created file has to be saved in the CSV (comma delimited) file format.

**VERY IMPORTANT:** The field format should never be changed. When the file is opened in WordPad or Notepad, the field separator has to be a comma (,) and should not have any double quotation marks (" ").



## AVAILABLE FIELDS

Below is the screen that will be displayed when the exported Example File is opened in WordPad.

```
Code, Descript, Alt_Descript, Department, SubDepartM, GenCode, Barcode,
ColorMatrix, SizeMatrix, Cycle, LineColourType, PackSize, PackDes, Avg
Cost, SellPrice1, SellPrice2, SellPrice3, SellPrice4, SellPrice5, SellP
rice6, SellPrice7, SellPrice8, SellPrice9, SellPrice10, Regular_SU, Sup
plierCo, Memo, Status, VatRate, BinL, Min_LVL, Max_LVL, Ord_LVL, Ord_Quan
, OrderMethod, OrderFormula, MaxDiscount, ReportItem, ReportCFactor, Ne
wPrice1, NewPrice2, NewPrice3, NewPrice4, NewPrice5, NewPrice6, NewPric
e7, NewPrice8, NewPrice9, NewPrice10, PriceChgl, FutureCost, FutureCost
Date, GenericType, Brand, Model, TechnicalSpec, SuppHierarchy, SuppDepa
rtment, ImportType, TariffCode, Material, AssemblyType, GuaranteeTerm,
ColorDetailed, IncoTerms, Memo, Buyer, Category, Range, ABCClassGP, Allo
wDiscountBits, DisAllowDecimals, EnterSer, Volumetrics, ScaleItem, Sto
ckType, OnholdType, ExcludeSellingValue, DefaultWarehouse, DefaultPur
chasingWarehouse, DefOutStatusCode, DefInStatusCode, MDR_Supplier_ID
TEST, Test Description, Alternative Test
Description, DEP, SUB, TEST, TEST, 1, 1, TEST, 1, 1, TEST, 0.00, 0.00, 0.00, 0.
00, 0.00, 0.00, 0.00, 0.00, 0.00, 0.00, 0.00, 0.00, 0.00, RegSupplier, SupplierCode, Me
mo, Status, 1, TestBin, 0.00, 0.00, 0.00, 0.00, 1, -1, 0.00, TEST, 1, 0.00, 0.0
0, 0.00, 0.00, 0.00, 0.00, 0.00, 0.00, 0.00, 0.00, 0.00, 01/01/2013, 0.00, 01/01/2
013, GenericTyp, Brand, Model, TechSpec, SuppHierarchy, SuppDepartment,
ImportType, TariffCode, Material, AssemblyType, GuaranteeTerm, ColorDe
tailed, IncoTerms, Extended
Description, Buyer, Category, Range, 0.00, 67, TRUE, FALSE, -1, FALSE, 0, 0,
0, 001, 001, TEST, TEST, MDRSupplierID
```

When updating the stock master details, a lot of the fields can be updated by entering a new value which will overwrite the already existing value in the field.

**NOTE:** If changes are made on some of the fields in the stock master details, it may have major implications in other modules, for example the vat rate and ItemCategory of an item.

**SUGGESTION:** Edit an existing stock item in Stock Maintenance and make the changes where required. Add those fields that were changed to the select visible fields. The values in those selected fields can then be used in the Stock Price Update module to be imported for all stock items with the same scenario.

## CODE

The Stock Code is a **mandatory** field (may not be BLANK). The user will not be able to update or add any stock item, without the stock item code. The code is limited to 15 alpha-numeric characters.

## DESCRIPT

The Stock Description will always be updated if provided. If a new item is created and you do not complete this fields (i.e. leave it blank) the new stock description will be updated with a blank value. Thus, always provide the required description for any new item to be created. The Stock item description is limited to 50 characters.

If the item already exist, the newly imported description will overwrite the old description.

## ALT\_DESCRIPT

Any additional information about the item and an extended description may be entered. The field will be updated with the provided value.

## ITEMCATEGORY

The ItemCategory field has an INTEGER value. The value will default to one (1), which is used for Stock Items. For all Non-Stock items the value is two (2), when the stock csv file is imported.

**NOTE:** Changing of the ItemCategory from Stock (1) to Non-Stock (2) will have a major effect on the stock values and quantities.

## DEPARTMENT

The Stock Major department is a **mandatory** field for **new** stock items and may not be BLANK. The values added in this field must be as they were created in the Stock Major Department Table in Company Details. If the value of this field doesn't exist on the Major department table or is blank when creating a new item, an error will be generated.

## SUBDEPARTM

If the Stock Sub Department is provided, the value must also exist in the Stock Sub Department Table (Groups Table). If the Major and Minor Departments are **linked** in the Company Details, the field is **required** (may not be BLANK) for any new items.

If the Sub-departments (minor departments) are linked to stock categories in the Module Parameters, both these fields need to be included in the import CSV file.

If the Sub-departments (minor departments) are linked to stock ranges in the Module Parameters, both these fields need to be included in the import CSV file.

## GENCODE

The Stock General Code will be updated if provided. The general code can be used as a secondary stock item code or barcode for use when integrating stock files. An example of a general code is the ISBN numbers of books.

## BARCODE

**Duplicate** Stock Barcodes will **not** be **allowed**. The stock Master file AND the temporary import table is checked for duplicated barcodes during the Import process. A barcode is an optical machine-readable representation of the data relating to the stock item to which it is attached.

**NOTE:** It is suggested that if there are no specific barcodes on the item that can be entered or scanned in, to use the stock item code as a replacement barcode.

## COLORMATRIX

The ColorMatrix is a number identifier for a Colour in the colours table, as created in Module Parameters. This field will be updated if the ColorMatrix is provided. An error will be generated if the identifying number is not found in the colours table.

## SIZEMATRIX

The SizeMatrix is a number identifier for a Size in the Sizes table, as created in Module Parameters. This field will be updated if the SizeMatrix is provided. An error will be generated if the identifying number is not found in the Sizes table.

## CYCLE

The Cycle field will be updated if provided (even if BLANK).

**Example:** Summer, Autumn, Winter and Spring.

## LINECOLOURTYPE

The Stock Line colour Indicator field also has an INTEGER value. This value will only be updated if Stock Custom Line Colours have been enabled in Default Settings (1) and if a value is provided. If the value is BLANK or equal to "0" (zero), it will be ignored. In this way items on special, cascading items, non-stock items, serial number items, etc. can be "visually" distinguished from other stock items.

To add / edit the line Colours select Utilities → Setup → Module Parameters → Stock → Item Line Colour.

## PACKSIZE

The Packsize field will be updated if provided, even if it is BLANK.

**Example:** When cascading items are used for Cokes, there are different stock codes for the single Cokes and the case of Cokes. The pack size for the single will be 1 and for a case of Cokes it will be 24.

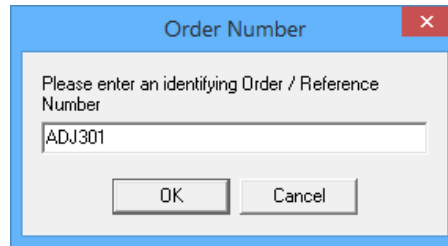
## PACKDES

The Pack Description field will be updated if provided, even if it is BLANK.

**Example:** Coke Single Can 330ml.

## AVRGCOST

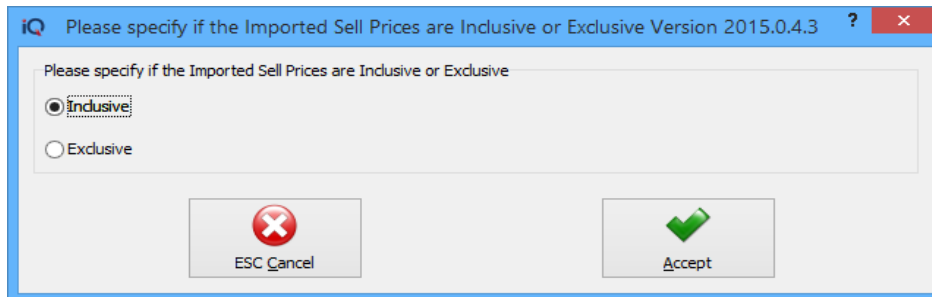
The Average Cost field will be updated if provided and when adding a new stock item. When editing, these values will be adjusted by the system via a Stock Adjustment transaction based on the AVRGCOST provided in the import file. When importing average costs for items, the system will prompt the user to enter an order number. There is a list available for all average cost adjustments made on stock items, in Stock → Reports → Stock Adjustment Report.



## SELLPRICE1 - 10

The SellPrice 1 – 10 are the current exclusive selling prices of the stock items. They will be updated if they are provided.

**NOTE:** When importing Sell Prices, the system will prompt the user to select if the prices are inclusive or exclusive of VAT.



## REGULAR\_SU

The Regular Supplier will only be updated if provided. If provided, the value has to match a Creditor’s Account in the Creditors Master File.

## SUPPLIERCO

The Supplier Stock Code will always be updated if provided. The Supplier Code is the item code used by the supplier for the item.

**NOTE:** If the supplier’s code for a stock item is different from the users stock code but there is only one main supplier, the code can be added to the system in this field.

## MEMO

The Memo Field will be updated if provided, even if it is BLANK. One of the examples of using the Memo field, is to use it for an extended description for the stock item.

## STATUS

The Item’s Status is a descriptive text field and will be updated if provided. This field is mainly used for filtering and reporting purposes.

Example:

- U = Unrestricted-use stock
- Q = Quality inspection stock
- B = Blocked stock
- S = Slow Moving

## VATRATE

The VATRATE is an Integer field which specifies the Vat Rate of the Stock Item. It will be updated if it is provided. If the VatRate doesn't exist for the selected item on the system, an error message will be generated when importing.

## BINL

The BinL (bin location) will be updated if provided, even if it is BLANK.

## MIN\_LVL

The Min\_Lvl (Minimum Level) will be updated if it is provided.

## MAX\_LVL

The Max\_Lvl (Maximum Level) will be updated if it is provided.

## ORD\_LVL

The Ord\_Lvl (Order Level) will be updated if it is provided.

## ORD\_QUAN

The Ord\_Quan (Order Quantity) will be updated if it is provided.

## ORDERMETHOD

The Ordermethod value will only be updated if provided. If the value is BLANK it will be ignored and no changes will be made to the Stock Master.

The user can use one of the three (3) available ordering methods:

0	Normal Ordering Method
1	Replenishment Ordering Method
2	Customized Ordering Method

## ORDERFORMULA

The Orderformula specifies the Ordering formula to use if the Order Method has been set to Custom Ordering. This is the number value of the Ordering Formula as it was created in the Module Parameters. An error message will be generated if the Ordering Formula doesn't exist in the Ordering Formula table.

## MAXDISCOUNT

The MaxDiscount field is used to specify the maximum discount percentage allowed on the selected stock item. The MaxDiscount field will be updated if a value is provided.

## REPORTITEM

Reporting Item is the item code of the main item, in other words the selected item reports to the main item. It will be updated if the Cascading items were enabled in Default Settings (1) and if it is provided. An error message will be generated if the Stock Item does not already exist in the Stock Master.

## REPORTCFACOR

The ReportCFactor is the conversion factor for Cascading Items. It will be updated if the Cascading Items were enabled in Default Settings (1) and if it is provided.

## NEWPRICE1 - 10

New Selling Prices will update if provided. New selling Prices can be imported for items and the system will automatically start on the indicated Pricechange1 date to use these new prices as the new Retail Prices. The system will prompt the user to select if these selling prices are VAT excluded or included.

## PRICECHG1

The Price Change-1 field will be updated if provided. This date will indicate when the system should start charging the new Selling prices, as they were imported.

## FUTURECOST

The Future Cost field will be updated if provided.

Future Cost will work for stock purchasing, if the "Default Cost For Goods Receiving And Purchase Orders" has been set to "Future Cost" in Default Settings (2).

The system can also be set in Defaults Settings (2) to "Check The Selling Of Stock Under Cost", to do the checking on future cost.

When the Future Cost needs to be imported, the user will also have to import a FutureCostDate, to tell the system on which date the future cost should be activated.

## FUTURECOSTDATE

The FutureCostDate is the day in future when the newly imported future cost per item will be implemented. The FutureCostDate has to be imported with the Future Cost and the stock item code.

## GENERICTYPE

The GenericType can be used to Auto Generate Item descriptions, if it is enabled in Module Parameters. This field will update if it the correct data is provided.

## BRAND

The Brand can be used to Auto Generate Item descriptions, if it is enabled in Module Parameters. This field will update if it the correct data is provided.

## MODEL

The Model can be used to Auto Generate Item descriptions, if it is enabled in Module Parameters. This field will update if it the correct data is provided.

## TECHNICALSPEC

The TechnicalSpec can be used to Auto Generate Item descriptions, if it is enabled in Module Parameters. This field will update if it the correct data is provided.



## **SUPPHIERARCHY**

The SuppHierarchy can be used to Auto Generate Item descriptions, if it is enabled in Module Parameters. This field will update if it the correct data is provided.

## **SUPPDEPARTMENT**

The SuppDepartment can be used to Auto Generate Item descriptions, if it is enabled in Module Parameters. This field will update if it the correct data is provided.

## **IMPORTTYPE**

The ImportType can be used to Auto Generate Item descriptions, if it is enabled in Module Parameters. This field will update if it the correct data is provided.

## **TARIFFCODE**

The TariffCode can be used to Auto Generate Item descriptions, if it is enabled in Module Parameters. This field will update if it the correct data is provided.

## **MATERIAL**

The Material can be used to Auto Generate Item descriptions, if it is enabled in Module Parameters. This field will update if it the correct data is provided.

## **ASSEMBLYTYPE**

The AssemblyType can be used to Auto Generate Item descriptions, if it is enabled in Module Parameters. This field will update if it the correct data is provided.

## **GUARANTEETERM**

The GuaranteeTerm can be used to Auto Generate Item descriptions, if it is enabled in Module Parameters. This field will update if it the correct data is provided.

## **COLORDETAILED**

The ColorDetailed can be used to Auto Generate Item descriptions, if it is enabled in Module Parameters. This field will update if it the correct data is provided.

## **INCOTERMS**

The IncoTerms can be used to Auto Generate Item descriptions, if it is enabled in Module Parameters. This field will update if it the correct data is provided.

## **MEMO**

The Memo can be used to Auto Generate Item descriptions, if it is enabled in Module Parameters. This field will update if it the correct data is provided.

## **BUYER**

The Buyer can be used to Auto Generate Item descriptions, if it is enabled in Module Parameters. This field will update if it the correct data is provided.

## **CATEGORY**

If the Sub-Departments (minor departments) are linked to Stock Categories in the Module Parameters, both these fields need to be included in the import CSV file. If the Stock Categories are linked to Stock Ranges in the Module Parameters, both these fields need to be included in the import CSV file.



## RANGE

If the Stock Categories are linked to Stock Ranges in the Module Parameters, both these fields need to be included in the import CSV file.

## ABCCLASS

Specifies the A, B, C class of stock items. The field will be updated if provided.

1	A – Top Products
2	B – Top KVI Lines Per Category
3	C – Non Sensitive Lines
0	Not Defined

## ABCCLASSGP

The GP percentage is used in conjunction with one of the above mentioned ABC Classes. The field will be updated if provided.

## ALLOWDISCOUNTBITS

This field “Allow Discount Bits” specifies the modules in which discount has been allowed for this stock item. The field will be updated if the correct values are provided.

0	Not Defined (No Discount Allowed)
1	Invoices and/or Recurring Charges
2	Credit Notes
4	Goods Receiving
8	Returns
16	Purchase Orders
32	Sales Orders
64	Quotes
128	Job Cards
256	Point of Sales

Each of the codes above represent a module in the system. The user can select one or a combination of the codes above to allow discount. When a combination is used, the codes for each of the modules have to be added together. In other words if discount will be allowed on the stock item in the Point of Sales, the Sales Orders and the Quotes modules, the code to use will be  $256 + 32 + 64 = 352$ . If all the modules are selected the code will be 511.

## DISALLOWDECIMALS

Import the DisallowDecimals field as “True” for all solid or pre-packed products, which need to be sold as a whole unit.

Change the DisallowDecimals field as “FALSE” when the units to measure are in meters, liters or kilograms.

**NOTE:** If the field is not provided, the system will default the field to FALSE.

## ENTERSER

This field specifies if Serial Numbers are enabled for this stock item. In other words, should we store serial numbers for this stock item. The "Enter serial number" will be updated if provided. If serial numbers are enabled, the user will use True for the Serial Number items and False for all other items.

## VOLUMETRICS

The Volumetrics values will be updated if the correct values are provided.

**NOTE:** The Volumetrics quantities and rounding figures have to be entered manually via the Stock Maintenance module.

The user has the option of one of each of the following volumes per item:

0	Units (Default setting)
1	Square Meters – Length x Width in meters
2	Cubes Meters – Length x width x height in meters
3	Linear – used to measure the perimeter of a rectangular. $(2 \times \text{Length}) + (2 \times \text{width}) = 2 \times (\text{length} + \text{width})$
4	Grams – the item's weight in grams
5	Kilograms – the item's weight in kilograms
6	Millimeters – length in millimeters
7	Meters – length in meters
8	Millimeters – volume in millimeters
9	Liters – volume in Liters
10	Tons – weight in Tons
11	Linear Square Millimeters - the perimeter in millimeters
12	Linear Square Meters - the perimeter in meters
13	Square Millimeters – length x width in millimeters
14	Cubes Millimeters – length x width x height measured in millimetres
15	Linear Millimeters - the perimeter in millimeters

## SCALEITEM

The ScaleItem field specifies if the stock item is a scale item or not. In other words, if a True is entered for an item, it means that this is a scale item. The value for all the non-scale items will be false. This field will be updated if a value "True"/"False" is provided.

**NOTE:** For all scale items, the check in the DisAllowDecimals field has to be removed and for importing purposes the field has to imported with the value "False".



## STOCKTYPE

The StockType field will be updated if the correct value is provided.

0	Normal Stock Item (Default Value
1	Cell Phone
2	AirTime
3	Television
4	Voucher
5	Sundry Item

## ONHOLDTYPE

This field "OnHold Type" specifies the modules in which this stock item has been set to ONHOLD. The field will be updated if the correct values are provided.

0	Units (Default setting)
1	Invoices and/or Recurring Charges
2	Credit Notes
4	Goods Receiving
8	Returns
16	Purchase Orders
32	Sales Orders
64	Quotes
128	Job Cards
256	Point of Sale
512	Stock Transfers
1024	Stock Transfer Requests
2048	Bill of Quantities
4194304	Agent Transactions
134217728	Laybys

Each of the codes above represent a module in the system. The user can select one or a combination of the codes above to be Onhold for the selected module. When a combination is used, the codes for each of the modules have to be added together. In other words if the selected stock item should be Onhold in the Point of Sales, the Sales Orders and the Quotes modules, the code to use will be  $256 + 32 + 64 = 352$ . If all the modules are selected the code will be 138416127.

## EXCLUDESELLINGVALUE

The ExcludeSellingValue field specifies if the stock item should be excluded from Ordering and then which modules it should be excluded from.

The field will be updated if the correct values are provided:

0	The item should not be excluded from ordering.
4	Exclude item from ordering in Goods Receiving (GRV)
16	Exclude item from ordering in Purchase Orders
20	Exclude item from ordering in Goods Receiving (GRV) and from Purchase Orders

### DEFAULTWAREHOUSE

The DefaultWarehouse field is the default warehouse which will be updated when the stock item is sold. This field will update if the correct number for a warehouse is provided, as it was created in Module Parameters.

### DEFAULTPURCHASINGWAREHOUSE

The DefaultPurchasingWarehouse field is the default warehouse which will be updated when the stock item is purchased. This field will update if the correct number for a warehouse is provided, as it was created in Module Parameters.

### DEFOUTSTATUSCODE

The Default Out Status Code field is the default Status Code which will be used when the stock item is sold or taken out of the system. This field will update if the correct status code, as it was created in Module Parameters.

### DEFINSTATUSCODE

The Default In Status Code field is the default Status Code which will be used when the stock item is bought or taken into the system. This field will update if the correct status code, as it was created in Module Parameters.

### MDR\_SUPPLIER\_ID

The MDR\_Supplier\_ID is the Master Data Repository Supplier Id number which will identify the same items between different branches which use different Stock item codes for the same item.

### MULTIPLEBARCODE

The system allows the user to add multiple barcodes to items. In other words, a selected item can have more than one barcode to identify the item. An example of the import file of multiple barcodes for an item:

```
CODE, MULTIPLEBARCODE
BM001, EM001
BM001, 600239369120
BM001, 540936897150
```

### MULTIPLEBIN

The system allows the user to store an item in multiple bin locations in a warehouse. In other words, a selected item can have more than one bin location where the stock is stored. An example of the import file of multiple bins for an item:

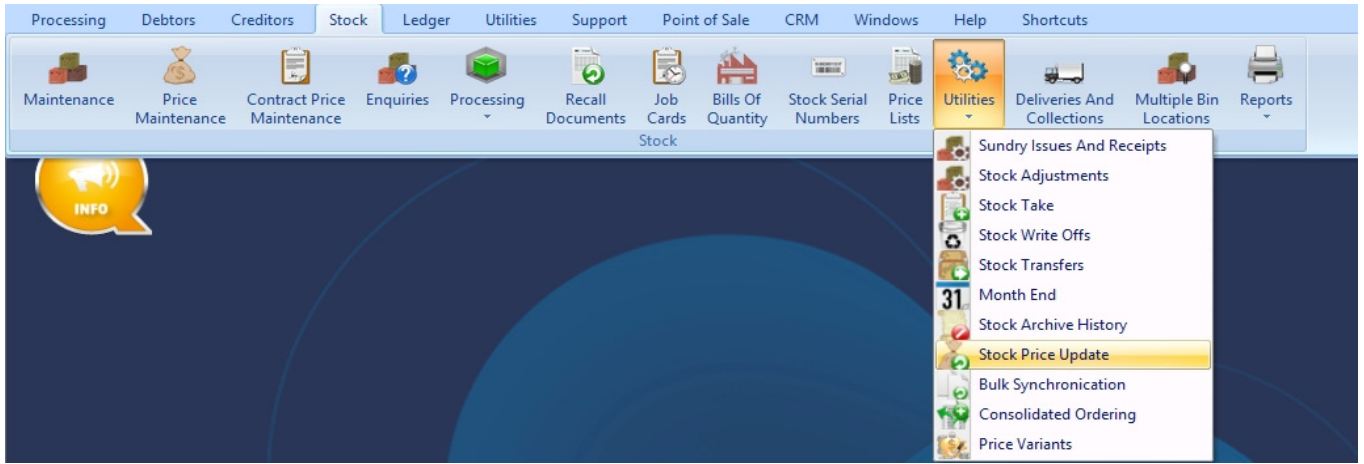
```
CODE, MULTIPLEBIN
BM001, LOC1
BM001, LOC2
BM001, LOC3
```

## BINWAREHOUSE

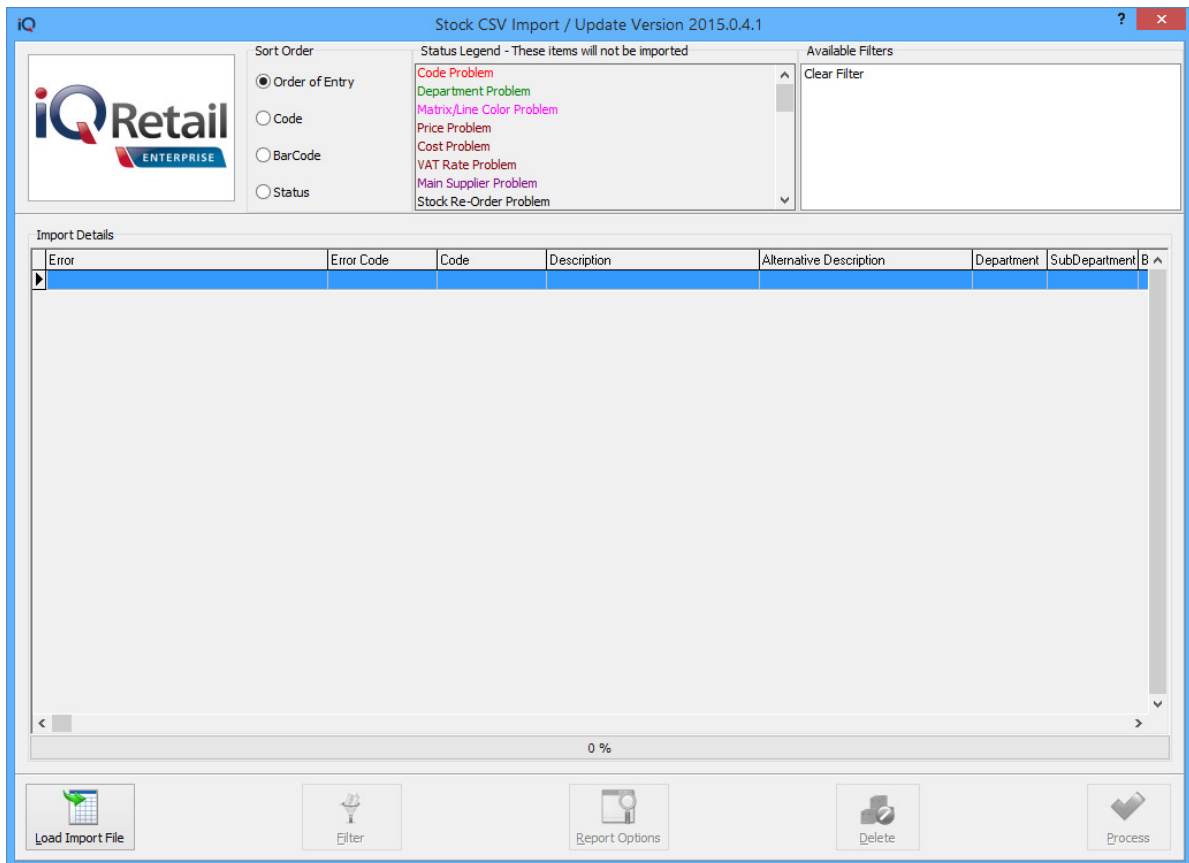
The system allows the user to link specific bin locations to specific warehouses. If the bin locations have been linked to a specific warehouse, for example Warehouse 1, the warehouse linked to the bin location can also be imported.

## IMPORTING OF .CSV FILE

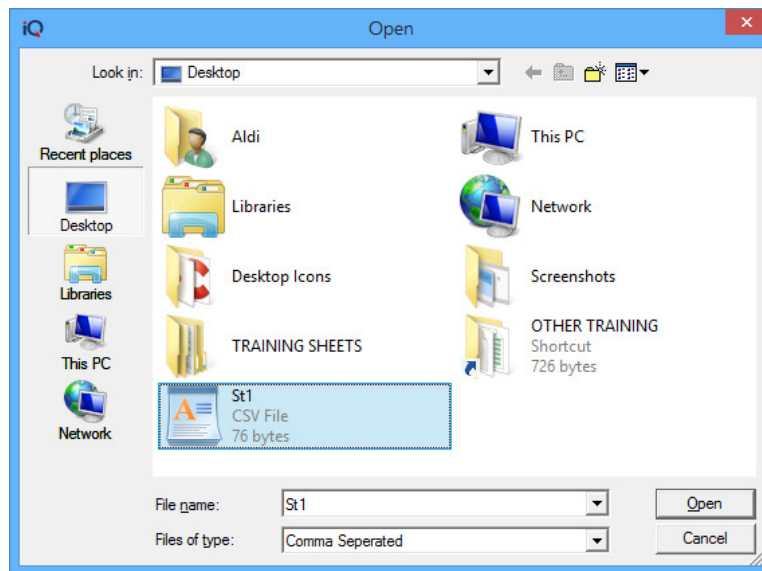
The Stock Price Update functionality can be found under IQ Enterprise → Stock → Utilities → Stock Price Update.



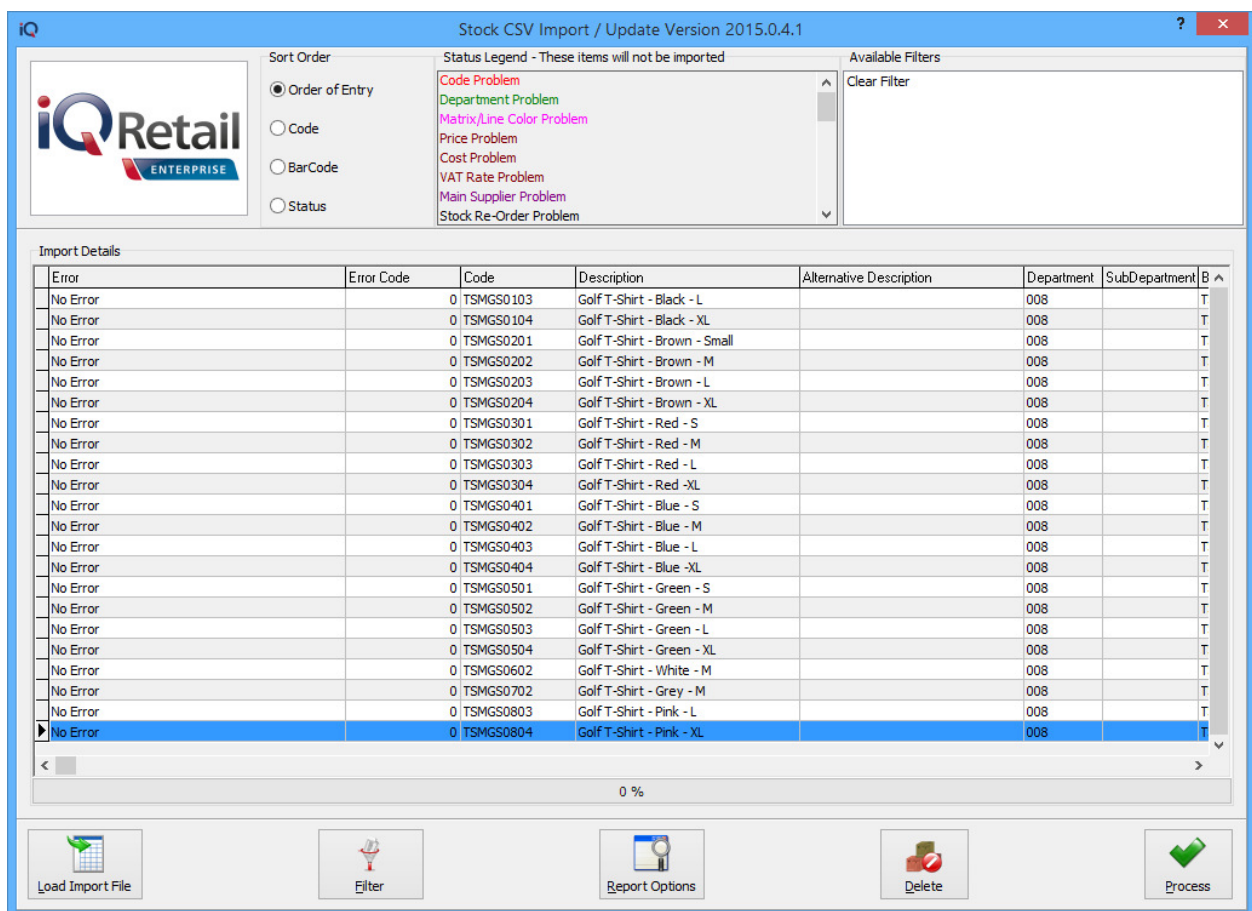
The following screen will be displayed:



Click on the Load import File button on the bottom of the screen → Select Import.



Select the .CSV (comma delimited) file from where it was saved and click on the Open button.



The display grid will display all the imported items or items that have been read from the import file. In addition to the usual field, the grid also shows an Error Column in the most left column. This column is colour coded according to the colour legend. When an item has a colour coded error, the item will NOT be imported during the import process. Such items will simply be skipped. Only valid items will be imported.

After the import process has been completed, all successfully imported items will be removed from the display grid. All items that still contain errors (or that have been re-evaluated during the import process and gained new errors), will remain in the display grid for further review and can be imported in the next go.

## BUTTON FUNCTIONALITY

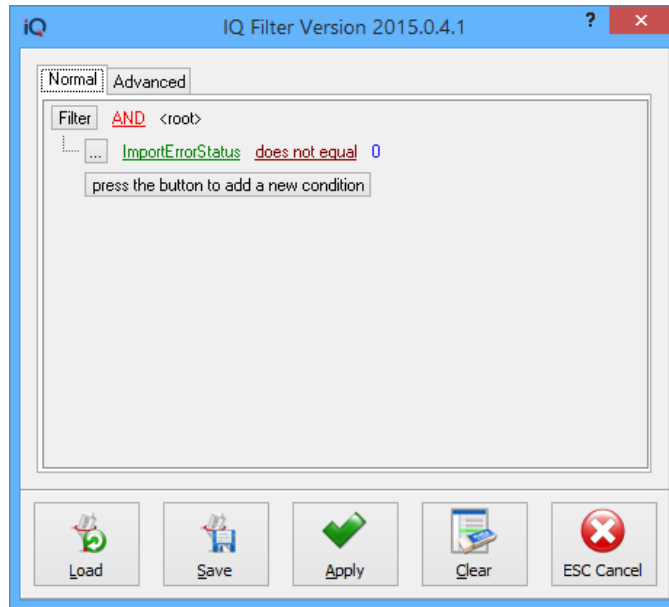
### LOAD IMPORT FILE

This option is used to import the selected file to import new or maintain old stock items. This option is the only option available until the stock file is imported.


### FILTER

The filter option allows the user to filter for specific information on the import grid.

Only the Load Import File button will be available at the bottom of the screen, which provides the user with two options: to Import a file or to Export the Example File.



Stock CSV Import:



Sort Order

Order of Entry

Code

BarCode

Status

Status Legend - These items will not be imported

- Code Problem
- Department Problem
- Matrix/Line Color Problem
- Price Problem
- Cost Problem
- VAT Rate Problem
- Main Supplier Problem
- Stock Re-Order Problem


Available Filters

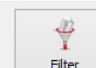
Clear Filter


Import Details


Error	Error Code	Code	Description	Alternative Description	Department	SubDepartment
Invalid Department		4 000000010101	NIKE PANTS BS		1	0
Invalid Department		4 000000010102	NIKE PANTS BM		1	0
Invalid Department		4 000000010103	NIKE PANTS BL		1	0
Invalid Department		4 000000020301	NIKE T-SHIRTS YS		1	0
Invalid Department		4 000000020302	NIKE T-SHIRTS		1	0
Invalid Department		4 000000020303	NIKE T-SHIRTS		1	0
Invalid Department		4 000000020402	NIKE T-SHIRTS GM		1	0
Invalid Department		4 000000040101	NIKE SHORTS		1	0
Invalid Department		4 000000060401	NIKE JOGGING SHIRT GS		1	0
Invalid Department		4 RET001	Return Item (negative)		012	R

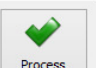
0 %











### REPORT OPTIONS

The Report Options allows the user to Design, Preview or Print the information on the screen.

Stock Price Update			
Parameters			
Printed At: 10/02/2016 12:02:10			
Ordered By: Order of Entry			
Import Status: After Import			
Code	Description	Department	Import Status
000000010101	NIKE PANTS BS	1	Invalid Department
000000010102	NIKE PANTS BM	1	Invalid Department
000000010103	NIKE PANTS BL	1	Invalid Department
000000020301	NIKE T-SHIRTS YS	1	Invalid Department
000000020302	NIKE T-SHIRTS	1	Invalid Department
000000020303	NIKE T-SHIRTS	1	Invalid Department
000000020402	NIKE T-SHIRTS GM	1	Invalid Department
000000040101	NIKE SHORTS	1	Invalid Department
000000060401	NIKE JOGGING SHIRT GS	1	Invalid Department
RET001	Return Item (negative)	012	Invalid Department

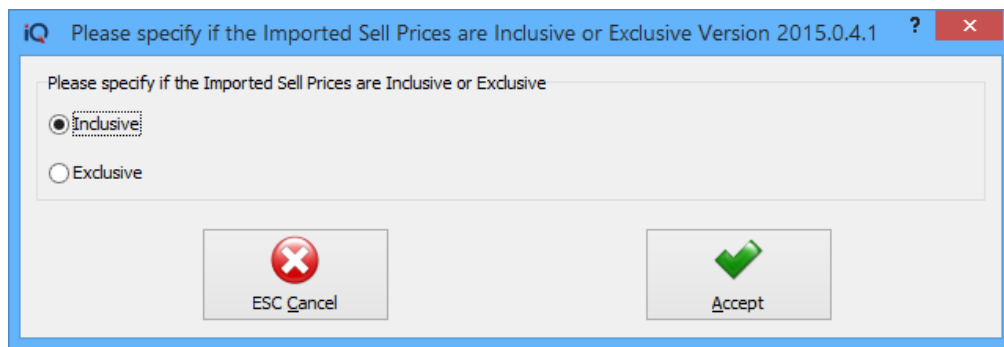
\*\*\* END OF REPORT \*\*\*

### DELETE

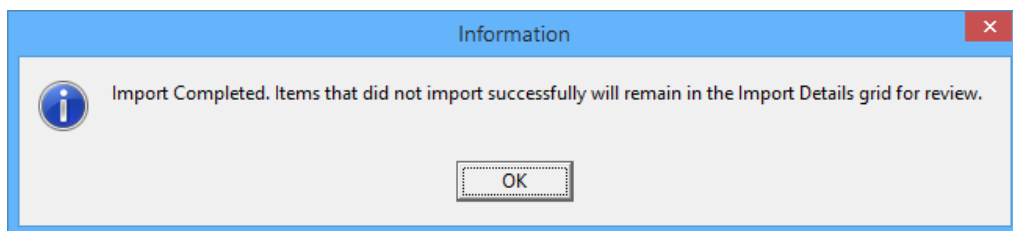
The Delete option allows the user to remove single items from the import process.

### PROCESS

On processing the data, IQ performs integrity checks for each item, to cater for changes to the Stock Master file that has happened since the time of import until the time of processing.



The user will be prompted to indicate if the Imported Sell Prices are Inclusive or Exclusive of VAT. Select either Inclusive or Exclusive and click on the Accept button.



An information message will appear to indicate that the import is completed and that items that did not import successfully will remain in the Import Details grid for review.

**NOTE:** Any changes made to the Average Cost of any item, will contain an Order Number to identify such import process as the source of the adjustment. A Stock Adjustment will be posted to the stock transaction and ledger as per normal stock adjustments.

**Sort Order**  
 Order of Entry  
 Code  
 BarCode  
 Status

**Status Legend - These items will not be imported**  
 Code Problem  
 Department Problem  
 Matrix/Line Color Problem  
 Price Problem  
 Cost Problem  
 VAT Rate Problem  
 Main Supplier Problem  
 Stock Re-Order Problem

**Available Filters**  
 Clear Filter

**Import Details**

Error	Error Code	Code	Description	Alternative Description	Department	SubDepartment	B
Invalid Department		4 000000010101	NIKE PANTS BS		1		0
Invalid Department		4 000000010102	NIKE PANTS BM		1		0
Invalid Department		4 000000010103	NIKE PANTS BL		1		0
No Error		0 000000010104	NIKE PANTS		008		0
No Error		0 000000010301	NIKE PANTS		008		0
No Error		0 000000010302	NIKE PANTS		008		0
No Error		0 000000010303	NIKE PANTS		008		0
No Error		0 000000010304	NIKE PANTS		008		0
No Error		0 000000010401	NIKE PANTS		008		0
No Error		0 000000010402	NIKE PANTS		008		0
No Error		0 000000010403	NIKE PANTS		008		0
No Error		0 000000010404	NIKE PANTS		008		0
No Error		0 000000010501	NIKE PANTS		008		0
No Error		0 000000010502	NIKE PANTS		008		0
No Error		0 000000010503	NIKE PANTS		008		0
No Error		0 000000010504	NIKE PANTS		008		0
No Error		0 000000010901	NIKE PANTS		008		0
No Error		0 000000010902	NIKE PANTS		008		0
No Error		0 000000010903	NIKE PANTS		008		0
No Error		0 000000010904	NIKE PANTS		008		0
Invalid Department		4 000000020301	NIKE T-SHIRTS YS		1		0
Invalid Department		4 000000020302	NIKE T-SHIRTS		1		0

0 %

Load Import File | Filter | Report Options | Delete | Process

After the Import Process, the user will be able to Filter / Sort the information to determine the origins of the Import problems.

These problems have to be rectified before the import is done again. IQ doesn't allow any changes to the information on the imported information.

Example of problems with CSV Import:

**Sort Order**  
 Order of Entry  
 Code  
 BarCode  
 Status

**Status Legend - These items will not be imported**  
 Code Problem  
 Department Problem  
 Matrix/Line Color Problem  
 Price Problem  
 Cost Problem  
 VAT Rate Problem  
 Main Supplier Problem  
 Stock Re-Order Problem

**Available Filters**  
 Clear Filter

**Import Details**

Error	Error Code	Code	Description	Alternative Description	Department	SubDepartment	B
Invalid Department		4 000000010101	NIKE PANTS BS		1		0
Invalid Department		4 000000010102	NIKE PANTS BM		1		0
Invalid Department		4 000000010103	NIKE PANTS BL		1		0
Invalid Department		4 000000020301	NIKE T-SHIRTS YS		1		0
Invalid Department		4 000000020302	NIKE T-SHIRTS		1		0
Invalid Department		4 000000020303	NIKE T-SHIRTS		1		0
Invalid Department		4 000000020402	NIKE T-SHIRTS GM		1		0
Invalid Department		4 000000040101	NIKE SHORTS		1		0
Invalid Department		4 000000060401	NIKE JOGGING SHIRT GS		1		0
Invalid Department		4 RET001	Return Item (negative)		012		R

0 %

Load Import File | Filter | Report Options | Delete | Process

---End of document---