



# ARTIFICIAL MANAGEMENT COST

# INTRODUCTION

Artificial Cost Management module will assist with an artificially inflated cost that allows management to set cost + percentage. This option will display as a view option only. Once the percentage has been entered the Manager Cost will display as a Rand Value. This was created to allow users to view only this cost instead of actual average cost.

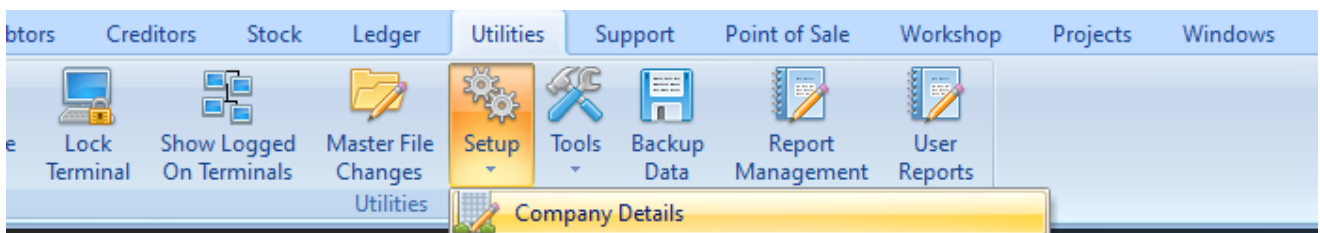
**FOR EXAMPLE:** If the Artificial Cost percentage is 25 % a stock item with an average cost (unit cost) of R10 the manager cost will be R12.50 or R95 average cost will display as R118.75.

**NOTE:** Artificial Management Cost will be available in the following modules: Stock Maintenance, Stock Enquires, Stock Sell Price (% Markup on Cost) and Good Receiving.

# SETUP

The first thing to do is to enable Artificial Management Cost on the system.

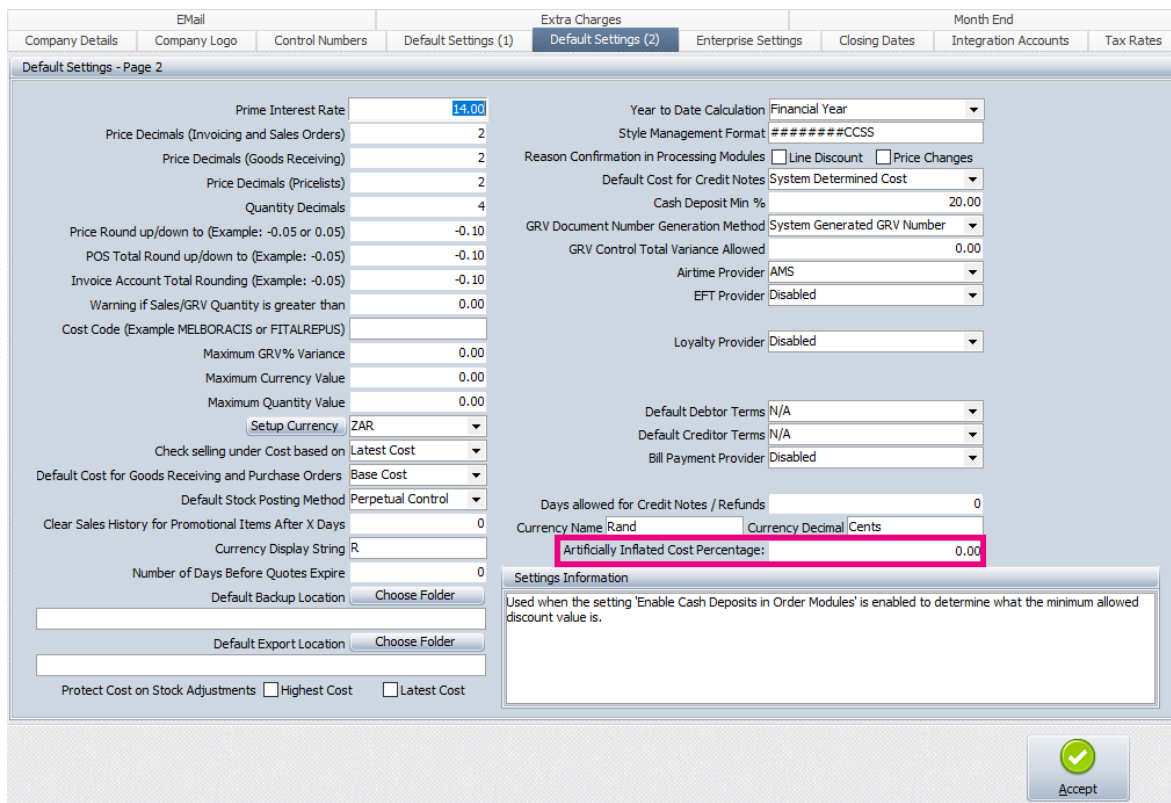
From the Main menu → Utilities → Setup → Company Details → Default Setting 2.



## DEFAULT SETTING 2 – ARTIFICIALLY INFLATED COST PERCENTAGE

The Artificially Inflated Cost Percentage will be a percentage, the percentage will then be displayed in a Rand value in various average cost related screens.

**NOTE:** Artificial Management Cost will be available in the following modules: Stock Maintenance, Stock Enquires, Stock Sell Price (% Markup on Cost) and Good Receiving.



## ENABLE ARTIFICIALTY INFLATED COST PERCENTAGE

Once the artificial cost has been entered in Default Setting 2 the Manager Cost will display under Stock → Maintenance → Edit Stock Item → Stock Pricing Tab.

**NOTE:** If the Unit Cost of a Stock Item is zero (0) the Manger cost will display as zero (0).

Stock Details | **Stock Pricing** | User Defined Data | Multiple Barcodes | Item Suppliers | Additional Details | Associated Items | Stock Movement | Ordering

Setup of Stock Selling Prices

Prices Type	Exclusive	Inclusive	Markup %	G.P. %	%	Markup (Latest Cost)	G.P % (Latest Cost)	Reporting Item 340ML C
Retail Price	0.0000	0.00	0.00	0.00		0.00	0.00	0.00
Wholesale Price	0.0000	0.00	0.00	0.00		0.00	0.00	0.00
Alternative Price 1	0.0000	0.00	0.00	0.00		0.00	0.00	0.00
Alternative Price 2	0.0000	0.00	0.00	0.00		0.00	0.00	0.00
Alternative Price 3	0.0000	0.00	0.00	0.00		0.00	0.00	0.00
Alternative Price 4	0.0000	0.00	0.00	0.00		0.00	0.00	0.00
Alternative Price 5	0.0000	0.00	0.00	0.00		0.00	0.00	0.00
Alternative Price 6	0.0000	0.00	0.00	0.00		0.00	0.00	0.00
Alternative Price 7	0.0000	0.00	0.00	0.00		0.00	0.00	0.00
Alternative Price 8	0.0000	0.00	0.00	0.00		0.00	0.00	0.00

Recommended Retail Based On :

**\* Recommended G.P % Not Assigned**

Cost Level 1	0.00	Average Cost	104.78
Cost Level 2	0.00	Latest Cost	104.35
Cost Level 3	0.00	Base Cost	0.00
Cost Level 4	0.00	Future Cost	0.00
Cost Level 5	105.26	Previous Cost	0.00
		<b>Manager Cost</b>	<b>104.78</b>

Pricing

Recommended GP%


Price Variant Group

Unit Cost


Future Cost

Cost as % of sellprice

Use Fixed Cost  Tick for Yes



Show Hints



Accept

# EXAMPLES OF MANAGER COST DISPLAY OPTIONS

The Manger Cost will display in Stock Enquires, Stock Search Screens, Select Visible Fields, Stock Price Maintenance (% Markup on Cost) and Stock Maintenance.

## STOCK ENQUIRIES VIEW - DISPLAY

From the Main menu → Stock → Enquiries → Select the Stock item → Display.

The screenshot displays the 'Stock Enquiries View - Display' for item '01FRI Friskies Chicken'. The interface is divided into several sections:

- Item Information:** Item Code (01FRI), Description (Friskies Chicken), Sales Orders (1), Purchase Orders (11), Work in Progress (0), Pack Size (0), Department (012), and Current Period (December 2020).
- Stock Data:** Opening Stock (52.0000), + Purchases (0.0000), -Returns (0.0000), -Sales (0.0000), +Credits (0.0000), +Transfers In (0.0000), -Transfers Out (0.0000), Adjustments (0.0000), WriteOffs (0.0000), + Sundry Receipts (0.0000), - Sundry Issues (0.0000), Other (0.0000), and Closing Stock (52.0000).
- Pricing and Costs:** Group Code (0019), Bin Location, Highest Cost (46.9783), Latest Cost (3.50), Average Cost (4.34), Last Sale (16/10/2020), Retail Price (8.00), and **Manager Cost (4.3361)** (highlighted in pink).
- Order and Inventory Data:** Order Method (Normal), Order Quantity (0), Order Level (0), Maximum Level (0), and Last Stock Date (30/12/1899).
- Additional Info:** DateLS (11/06/2020), DateLM (16/10/2020), DateLP (16/10/2020), DateLT (08/11/2017), and Prev Sell Price (7.01754385965).
- Details Table:** A table listing transactions with columns: Date, TCode, Reference, Order Number, Creditor, GLAudit, Rep, User, Cost, Profit, Amount, Quantity, and On Hand. The first row is highlighted in pink.
- Toolbar:** Includes icons for Select Visible Fields, Search, Sales History, Cost Levels, G.L. Audit, Document Options, Report Options, Locations, and Filter.

**NOTE:** The manger Cost is only a display / view option.

## STOCK ENQUIRIES VIEW – SELECT VISIBLE FIELDS

From the Main menu → Stock → Enquiries → Select Visible Fields → ManagerCost.

Once the Management Cost has been selected select Accept.

CODE	DESCRPT	BARCODE	DEPARTMENT	ONHAND	ManagerCost	ACKSIZE	AVRG COST	SELLPRICE1	REGULAR_SU	SUPPLIERCO	BINL
101-1-00371	F/Saver Takealong 950ml RECT 3pk	101-1-00371	001	236.0000	19.34	0.00	19.34	56.52			
101-1-00372	F/Saver Takealong 760ml RND 4pk	101-1-00372	001	0.0000	0.00	0.00	0.00	56.52			
101-1-00373	F/Saver Takealong 1.4L Rnd 3pk	101-1-00373	001	0.0000	0.00	0.00	0.00	56.52			
101-1-00374	F/Saver Takealong 669ml SQ 4pk	101-1-00374	001	0.0000	0.00	0.00	0.00	56.52			
101-1-00375	F/Saver Takealong 1.2L SQ 4pk	101-1-00375	001	0.0000	0.00	0.00	0.00	0.00			
103--4-00011	Rollerbox 88L Clear	103--4-00011	001	-2.0000	0.00	0.00	0.00	217.39			
123456780110	TEsting	123456780110	001	50.0000	434.78	0.00	434.78	0.00			
1Q001	other	1Q001	007	5.0000	5.00	0.00	5.00	0.00			
24CC	24 Case Coke	24CC	012	0.0000	421.05	0.00	419.10	631.58			
2909257009751	Test1	2909257009751	012	1.0000	0.00	1000.00	0.00	90.00			
2997580136978	Rump Steak	2997580136978	012	0.0000	23.00	0.00	23.00	67.83			
340ML C	Coke 340ML Can	340ML C	012	2 255.0000	17.46	1.00	17.46	0.00			
6PC	6 Pack Coke	6PC	011	0.0000	105.26	0.00	104.78	0.00			
ABC001	Matthew Test	ABC001	001	0.0000	0.00	0.00	0.00	45.00	1TIM00	ABC002	
ADA01	CHRONOS ADAPTER USB TO SERIAL	ADA01	001	0.0000	100.00	1.00	100.00	146.00			001
ADA02	ST LAB USB TO PARALLEL ADAPTER	ADA02	001	12.0000	87.72	0.00	87.72	131.58	1TIM00	123456	001
ADA03	USB TO PARALLEL PORT (SURAT) 2	ADA03	001	3.0000	192.98	0.00	192.98	384.21			002

### STOCK SEARCH SCREEN

From the Main menu → Processing → Goods Receiving → Select the Creditor → Select the Stock item.

**NOTE:** For all the Management cost fields to display an amount, a transaction must be processed for the stock item or to see the Cost Management field the user can open the stock item in Stock → Maintenance → Edit → Accept the stock item. This will update the new field information.

Search By - double click to change

- DEFAULT
- GENCODE
- DESCRIPTION
- DEPARTMENT
- SUPPLIERCODE
- BARCODE
- BINL
- Regular\_SU

Available Filters

Clear Filter

Filter Records Clear

Back

CODE	DESCRIPT	BARCODE	ONHAND	ManagerCost	SELLPRICE1	SELLPINC1
001	Beef	20000000001	28.00	10.1304	243.48	280.00
002	advertising	002	0.00	0	200.00	230.00
003		003	0.00	0	0.00	0.00
00FRI	Friskies Beef	00FRI	22.00	6.0277	3.11	3.55
00KFR	Friskies Kitten Beef	00KFR	8.00	3.5	7.02	8.00
012	Buyout item	012	16.00	0	0.00	0.00
01FRI	Friskies Chicken	01FRI	52.00	4.3361	7.02	8.00
01KFR	Friskies Kitten Chicken	01KFR	27.00	3.5306	7.74	8.90
02FRI	Friskies Lamb	02FRI	40.00	4.587	7.02	8.00
02KFR	Friskies Kitten Lamb	02KFR	31.00	3.5	7.02	8.00
03FRI	Friskies Beef Jelly	03FRI	26.00	3.5	4.39	5.00
03KFR	Friskies Kitten Beef Jelly	03KFR	43.00	4.8246	7.02	8.00
04FRI	Friskies Chicken Jelly	04FRI	26.00	3.5	7.02	8.00
04KFR	Friskies Kitten Chicken Jelly	04KFR	44.00	3.5	7.02	8.00

## STOCK PRICE MAINTENANCE

From the Main menu → Stock → Price Maintenance → % Markup on Cost → All or Single item.

**Current Stock Item**

Single Item Selected

Stock Code	01FRI
Stock Description	Friskies Chicken
Packsizes	0.00
Average Cost	4.336
Latest Cost	3.50
Future Cost	0.00
Manager Cost	4.336

**Apply When:**

Right Now

Future Date

**Use this cost:**

Average Cost

Latest Cost

Future Cost (User defined)

Highest of Latest Or Average Cost

**Auto Calculation:**

Never Auto Calc

Auto Calc on Average Cost

Auto Calc on Latest Cost

Auto Calc After GRV on Selected Cost

Auto Calc on user defined Future Cost

Auto Calc on Highest Cost

**Price Change**

Price Type	Exclusive	Inclusive	Enable
Retail Price	7.01754	8.07018	<input type="checkbox"/>
Wholesale Price	0.00000	0.00000	<input type="checkbox"/>
Alternative Price 1	0.00000	0.00000	<input type="checkbox"/>
Alternative Price 2	0.00000	0.00000	<input type="checkbox"/>
Alternative Price 3	0.00000	0.00000	<input type="checkbox"/>
Alternative Price 4	0.00000	0.00000	<input type="checkbox"/>
Alternative Price 5	0.00000	0.00000	<input type="checkbox"/>
Alternative Price 6	0.00000	0.00000	<input type="checkbox"/>

% Markup on Price		Enable
Markup on Retail Price	0.00000	<input type="checkbox"/>
Markup on Wholesale Price	0.00000	<input type="checkbox"/>
Markup on Alternative Price 1	0.00000	<input type="checkbox"/>
Markup on Alternative Price 2	0.00000	<input type="checkbox"/>
Markup on Alternative Price 3	0.00000	<input type="checkbox"/>
Markup on Alternative Price 4	0.00000	<input type="checkbox"/>
Markup on Alternative Price 5	0.00000	<input type="checkbox"/>
Markup on Alternative Price 6	0.00000	<input type="checkbox"/>

Price Type	Actual G.P. %	Target G.P. %	Enable
Retail Price	38.2106	38.21058	<input type="checkbox"/>
Wholesale Price	0.0000	0.00000	<input type="checkbox"/>
Alternative Price 1	0.0000	0.00000	<input type="checkbox"/>
Alternative Price 2	0.0000	0.00000	<input type="checkbox"/>
Alternative Price 3	0.0000	0.00000	<input type="checkbox"/>
Alternative Price 4	0.0000	0.00000	<input type="checkbox"/>
Alternative Price 5	0.0000	0.00000	<input type="checkbox"/>

0 %

Cancel

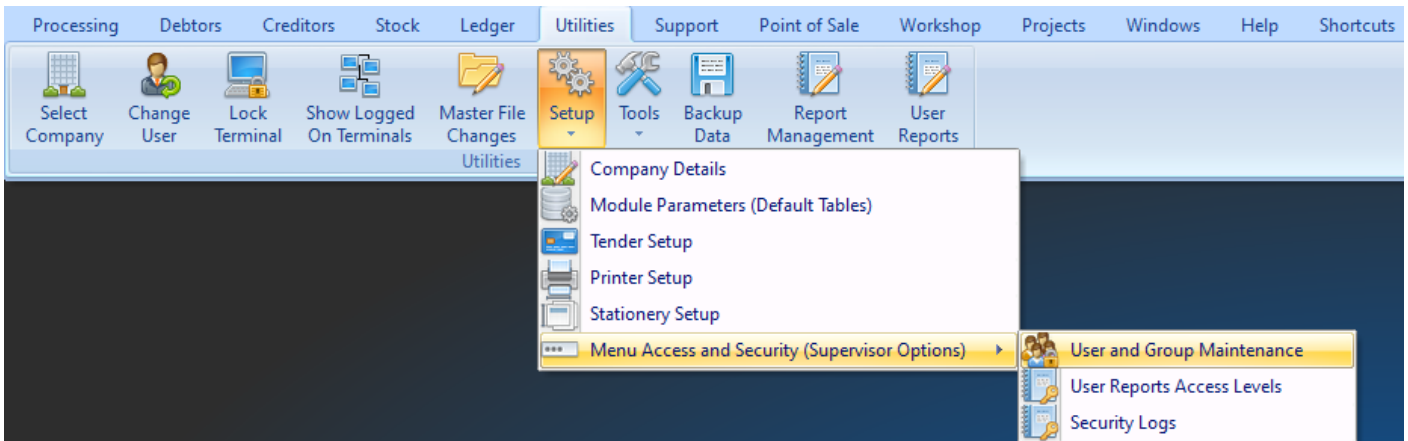
Reload Current Prices

Apply to Current Item

**NOTE:** The manger Cost is only a display / view option.

# SECURITY

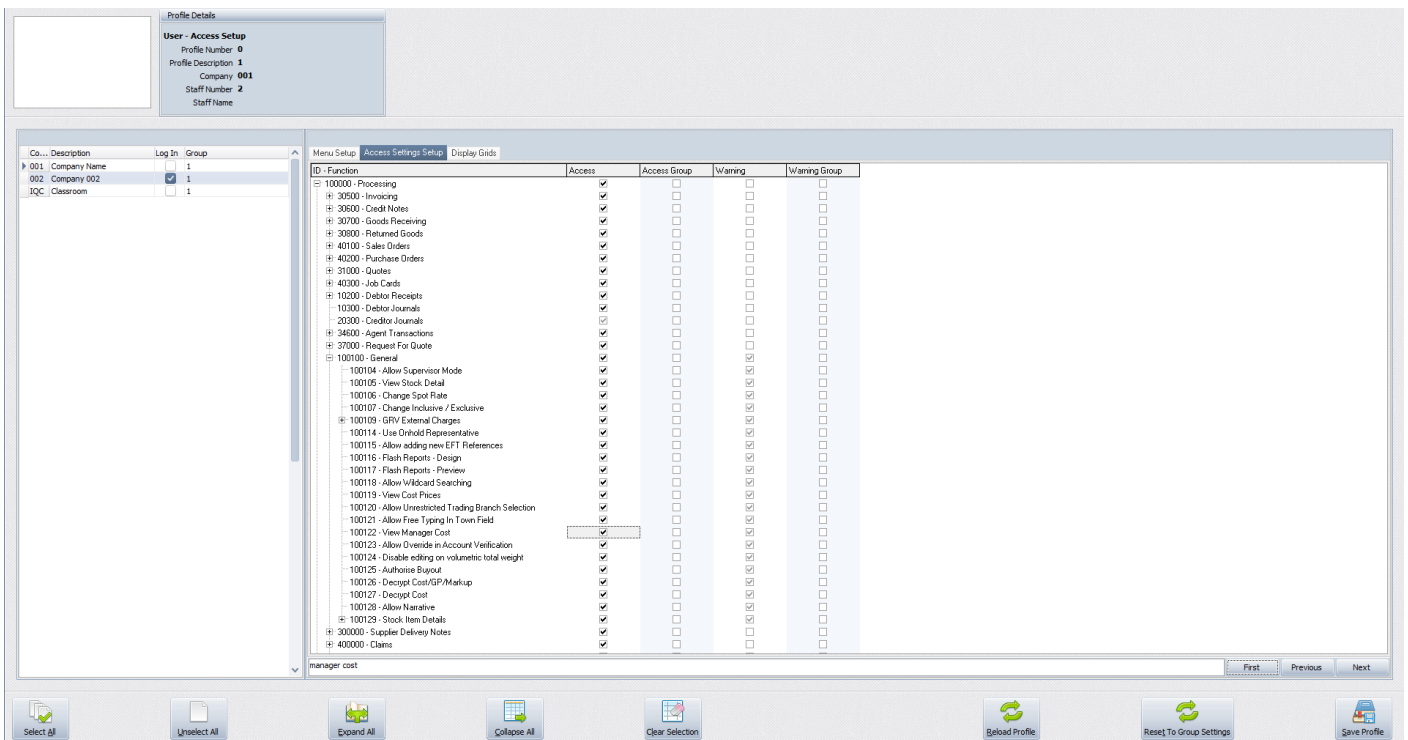
From the Main menu → Utilities → Setup → Menu Access and Security → User and Group Maintenance → Group → Select Group → Group Menu & Security Settings → Access Setup.



Once the Access Setup has been select the search option will display at the bottom of the screen type the relevant security number and select first, select the check box if applicable for the Group, repeat this function for all security codes.

## VIEW MANGER COST SECURITY CODE (100122)

The View Manager Cost option will allow a user to view the Management Cost percentage in Stock → Enquiries → Display a Stock Item → Stock Pricing Tab.



--- End of document ---